



VINTAGE SPEED

Liability Clause / Warranty

1. All Vintage Speed products come with a 5 year warranty. (except pine rods and plastic pad parts).
2. Vintage Speed will not accept liability in the event of mis-use or mis-handling of our products.
3. Exterior damage DOES NOT apply to warranty.
4. Only qualified and certified technical specialists should be involved in the installation and assembly of our product
5. Stock engine with stock single solex carburetor requires increment on idle jet and main jet to set up correct air fuel ratio.

For example :

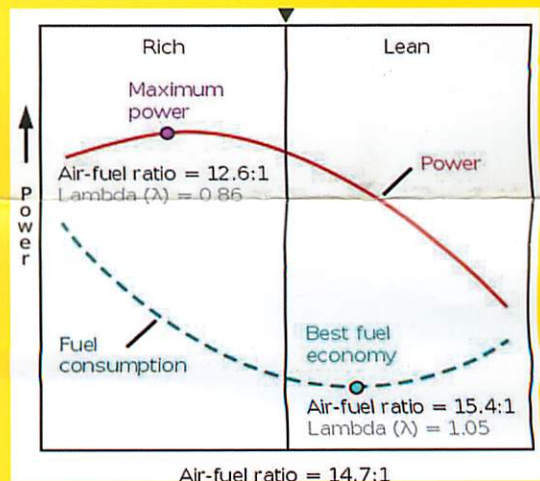
- If you have 55 idle jet, you will need 60 idle jet
- If you have 115 main jet, you will need 120 main jet.

* **WARNING** *

Incorrect set up of air fuel ratio may cause overheating on muffler, which can cause cracks on welding point.

PLEASE make sure your air fuel ratio is set up correctly .

Cracks cause by incorrect air fuel ratio WILL VOID the warranty.



Return / Exchange

1. Purchase receipt / invoice / email must be provided for return and exchange.
2. Please provide product ID number
3. For return / exchange, please provide photos of the product from multiple angles : down, up, left and right.
4. Exterior damage DOES NOT apply to warranty.
5. If there is a rattling sound in your muffler, please provide a video showing the rattling sound.
 - take off the muffler, shake the muffler by hand
 - take off the muffler, hit the muffler with rubber hammer