




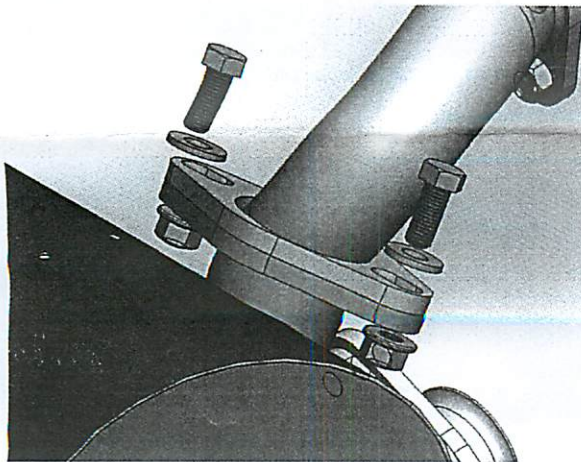


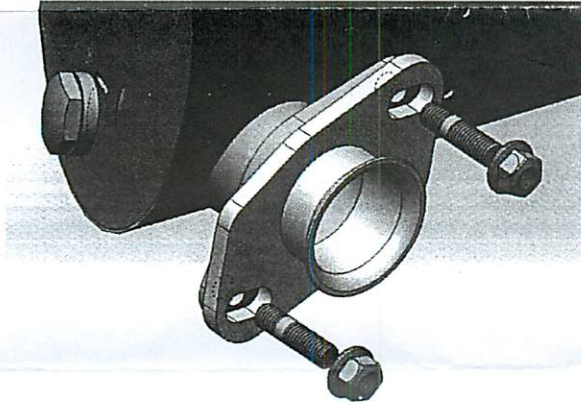
INSTRUCTION 可調Flanges

Vintage Speed Heater Box Style Exhaust Systems

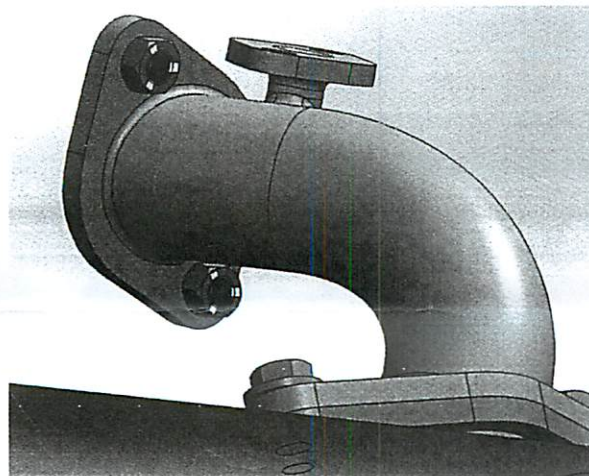
NO.	ITEM	QTY.	NO.	ITEM	QTY.
1		4	4		4
2		4	5		4
3		8			



Step 1
Bolt the #2 and #4 short headers to muffler.
Do not fully tighten.



Step 2
Bolt the #1 and #3 flare flanges to muffler.
Do not fully tighten.



Step 3
Install the exhaust system into engine.
Caution : Lock nuts have 3 notches that face outward

Slide the muffler (left or right), in order to set up tail pipes at desired location.
Finally, torque all bolts and nuts to 16Nm.