

315-001-02IDF, 315-001-02IDA Installation Instruction



315-001-02IDF



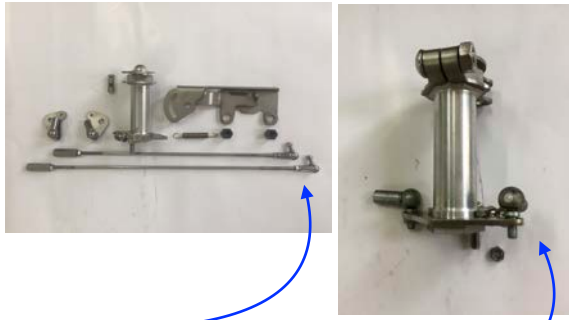
315-001-02IDA

The throttle levers with added on stopper



The Linkage comes with:

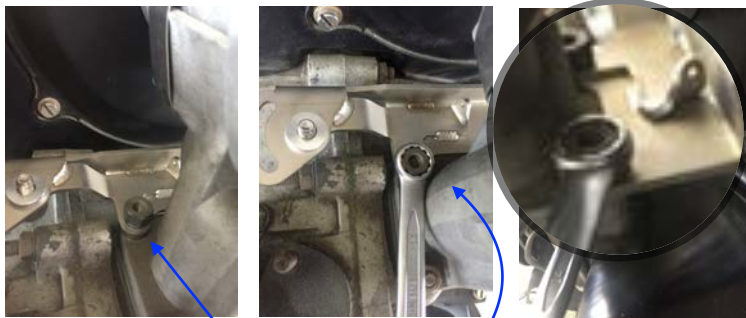
- Heavy Duty Base plate, with M14 bolts.
- Center Rotor, dual ball bearing,
- Return Spring,
- Throttle Levers,
- Throttle Cable Nut,
- Long & Short Push Rods



Remove the two Rods from Push Rods and attach onto the center rotor.



Remove the 2 bolts at inner side of alternator stand.



Install the Heavy Duty base plate with two M14 bolts.



Install Center Rotor.
* Note the spacer in between the base plate and rotor.



Install the Return Spring



Install the Throttle Levers. Do not interfere the return spring on the carbs, check throttle movement after install this levers. Do this on both side carbs.



Install the two Push Rods, cut the push rod length if needed. The longer rod is for inner (#1,#2 right side carb).

Re-connect the throttle cable with the supplied Throttle Cable Nut and Adjusting the two push rod with best performance.

Enjoy the Best Linkage !!

Follow us on Facebook: www.facebook.com/carreraparts

Note:

The linkage Ball comes with two different type, **THREADED** and **NON-THREADED**:

A: Threaded, this is to bolt on the Center Rotor

B: Non-Threaded, this is to bolt on the carburetor plate, and because of larger inner diameter, so the Linkage Push Rod can slid in without the need to cut, only if the linkage rod is not **PUSHING** the Ball.

