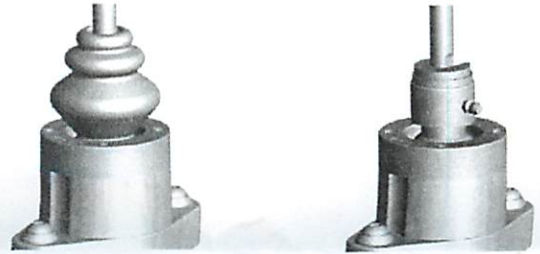


## VINTAGE SPEED SHIFTERS INSTALLING AND MAINTENANCE

The bottom ball of the shifter should be cleaned and greased all moving parts with universal grease once a year, or anytime when shifting difficulty.

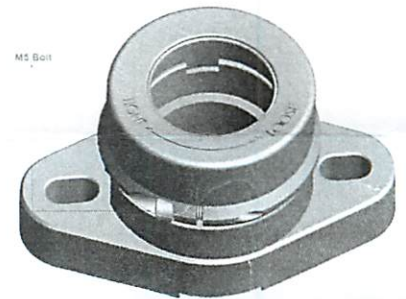
### TO GREASE CLASSIC SPORT SHIFTERS

Please pull up the rubber boot, and install the grease fitting to the shifter. It should be greased anytime when shaft is difficult to pull up.



### TO ADJUST CNC MACHINE BASE FOR TIGHTER OR LOOSER FEEL

1. Loosen the M5 bolt near the base of the shifter (see photo.)
2. Adjust the feel of the shift lever by turning the top of the housing. (see photo.)
3. After setting up the housing tension, tighten the M5 bolt to 7.3 ft/lbs. (10Nm.)



### SHIFTING PROBLEMS AND SOLUTIONS

#### PROBLEM 1:

RESERVE GEAR CAN BE ENGAGED W/O PULLING THE REVERSE HOOK LOCK  
PUSH THE BOTTOM STEEL PLATE TO THE LEFT

#### PROBLEM 2:

1ST. & 3RD. WON'T ENGAGE

PUSH THE ALUMINUM SHIFTER BASE TO THE FRONT

#### PROBLEM 3:

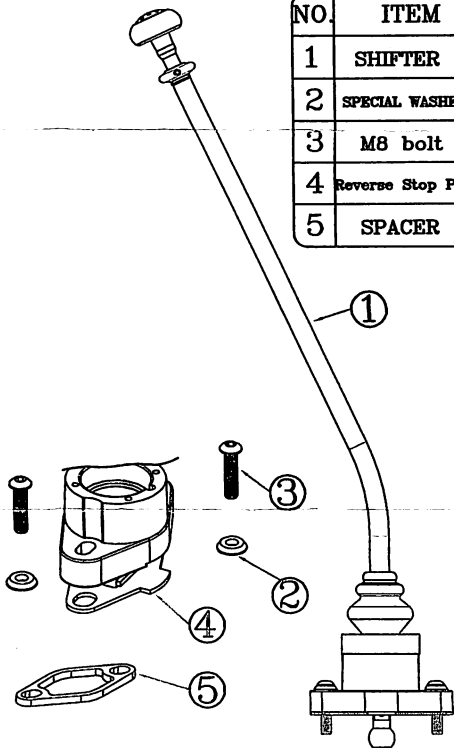
2ND. & 4TH. WON'T ENGAGE

PUSH THE ALUMINUM SHIFTER BASE TO THE REAR

# Classic Quick Shifter 4 speed

155-795-50SPT

NO.	ITEM	QTY.
1	SHIFTER	1
2	SPECIAL WASHER	2
3	M8 bolt	2
4	Reverse Stop Plate	1
5	SPACER	1



[www.vintagespeed.com.tw](http://www.vintagespeed.com.tw)